

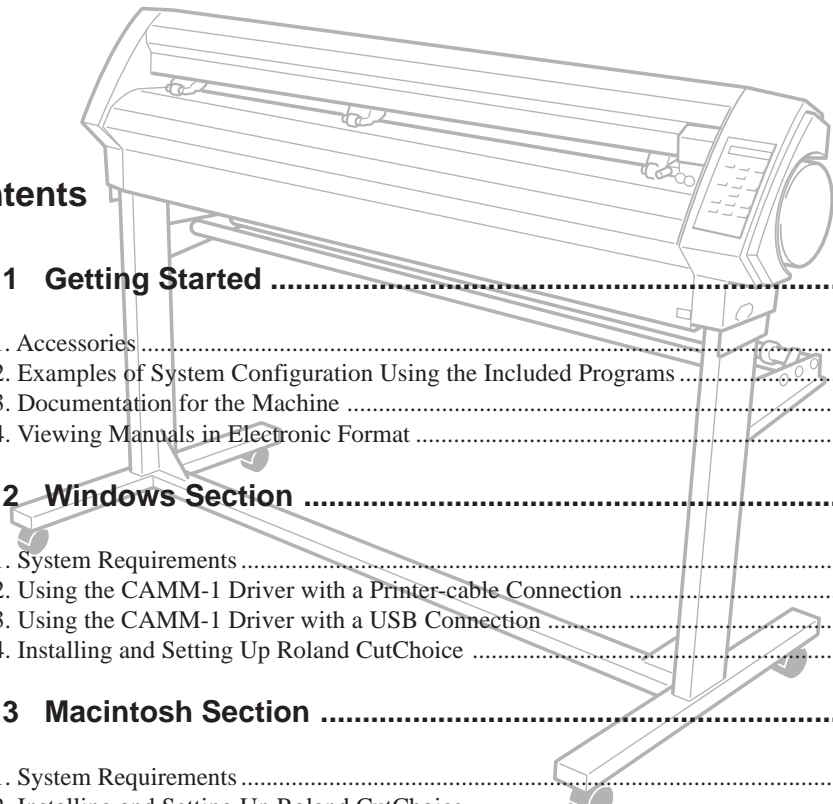
CX-500/400/300

Startup Manual

BE SURE TO READ THIS FIRST

Thank you very much for purchasing this product. This document describes the included items and accessories, program installation and setup, and other important matters. Be sure to read this manual before use.

Contents



Part 1 Getting Started	1
1-1. Accessories	2
1-2. Examples of System Configuration Using the Included Programs	3
1-3. Documentation for the Machine	4
1-4. Viewing Manuals in Electronic Format	5
Part 2 Windows Section	7
2-1. System Requirements	8
2-2. Using the CAMM-1 Driver with a Printer-cable Connection	9
2-3. Using the CAMM-1 Driver with a USB Connection	10
2-4. Installing and Setting Up Roland CutChoice	13
Part 3 Macintosh Section	15
3-1. System Requirements	16
3-2. Installing and Setting Up Roland CutChoice	17

Roland CutChoice™ is a trademark of Roland DG Corporation.
Windows® and Windows NT® are registered trademarks or trademarks of Microsoft® Corporation in the United States and/or other countries.
Macintosh and Mac OS are registered trademarks or trademarks of Apple Computer, Inc. in the USA and other countries.
PowerPC is a trademark of International Business Machines Corporation.
Adobe, Acrobat and Adobe Illustrator are trademarks of Adobe Systems Incorporated.
Corel and CorelDRAW are registered trademarks or trademarks of Corel Corporation or Corel Corporation Limited.
Other company names and product names are registered trademarks or trademarks of their respective holders.

Copyright © 2001 Roland DG Corporation

<http://www.rolanddg.com/>

Part 1

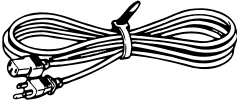
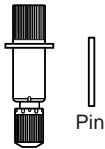


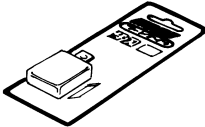

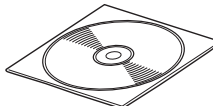
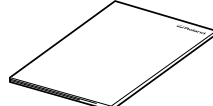
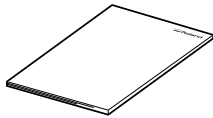
Getting Started

1-1. Accessories	2
Checking the Accessories	2
1-2. Examples of System Configuration Using the Included Programs	3
Configuration using Roland CutChoice (Windows/Macintosh)	3
Configuration using the CAMM-1 driver (Windows)	3
1-3. Documentation for the Machine	4
Included Documents	4
1-4. Viewing Manuals in Electronic Format	5
CX-500/400/300 User's Manual (Windows/Macintosh)	5
Roland CutChoice User's Manual	5
Online Help for the CAMM-1 Driver	6

1-1. Accessories

Checking the Accessories

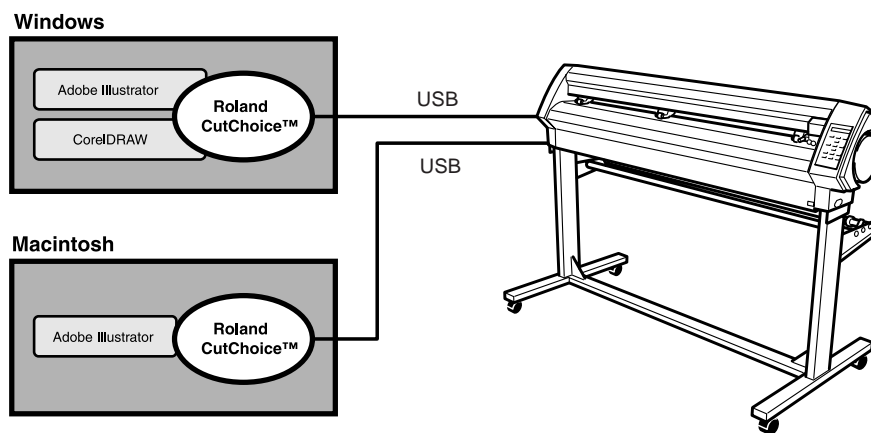
Check the following to make sure that you received all the items that were shipped together with the machine.

 <p>Power Cord</p>	 <p>Blade Holder (XD-CH3) Pin</p>	 <p>Blade</p>	 <p>Alignment Tool</p>
 <p>Replacement Blade for Separating Knife</p>	 <p>Cable Clamp</p>	 <p>CD-ROM (Roland Software Package) (/ CutChoice installer CD)</p>	 <p>Startup Manual (This manual)</p>
 <p>To Ensure Safe Use</p>			

1-2. Examples of System Configuration Using the Included Programs

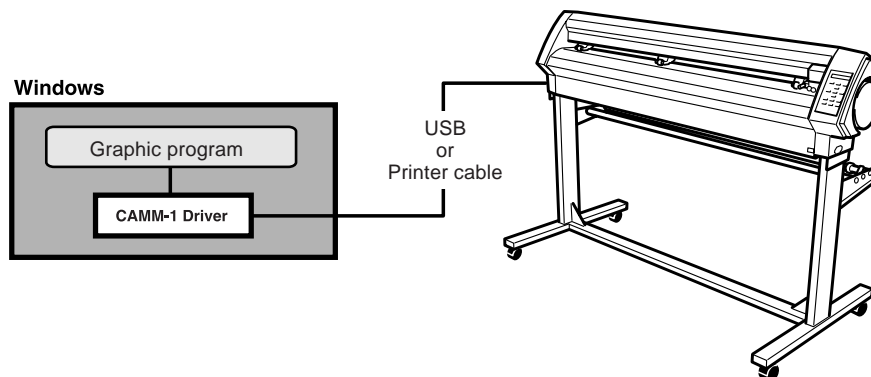
Configuration using Roland CutChoice (Windows/Macintosh)

Roland CutChoice is a cutting-use plug-in that is compatible with Adobe Illustrator and CorelDRAW. It lets you perform high-quality cutting for artwork designed using Adobe Illustrator or CorelDRAW. It is compatible with Adobe Illustrator and CorelDRAW for Windows, and with Adobe Illustrator for the Macintosh.



Configuration using the CAMM-1 driver (Windows)

This configuration combines the included Windows-based driver (CAMM-1 driver) with a drawing-based graphic program or the like. It lets you cut things of relatively small size with ease.



1-3. Documentation for the Machine

Included Documents

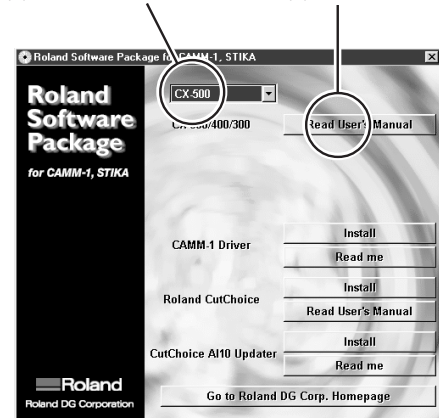
To Ensure Safe Use	This document contains important notes for ensuring the safe use of this product. Please be sure to read it before use.
Startup Manual	This manual. Be sure to read this before use.
CX-500/400/300 User's Manual (PDF format)	The user's manual for the CX-500/400/300 is in electronic format, and is on the included CD-ROM. A printed version is not included. You can easily view it on your computer running Windows or your Macintosh. You can also print it out as required. For information on how to view the electronic manual, see the following section.
Roland CutChoice™ User's Manual (PDF format)	Read this if you're using Roland CutChoice. It describes installation and setup in detail, as well as operation. The manual is in electronic format, and you can find it on the included CD-ROM. A printed version is not included.
PNS-502/402/302 Assembly Instructions (shipped with the stand)	This document describes the assembly and installation of the special stand. It is included with the stand.

1-4. Viewing Manuals in Electronic Format

CX-500/400/300 User's Manual (Windows/Macintosh)

1. Place the included CD-ROM in the CD-ROM drive. The menu screen appears automatically.
2. Click the [Click here] message, then choose the name of the model you're using (CX-500, CX-400 or CX-300).
3. Click the [Read User's Manual] button. Acrobat Reader starts and the user's manual is displayed.
 - * When you click the button for the first time, the program for installing and setting up Acrobat Reader may start. Follow the on-screen instructions to proceed with installation and setup.
4. You can use the left and right arrow keys on the computer keyboard to advance to the next page or go back to the previous page. (You can also do the same thing using the [◀] and [▶] buttons on screen.)

(1) Choose the model name. (2) Click the button.

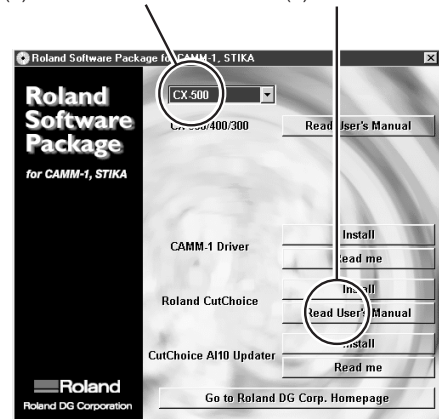


* The screens show the version for Windows.

Roland CutChoice User's Manual (Windows/Macintosh)

1. Place the included CD-ROM in the CD-ROM drive. The menu screen appears automatically.
2. Click the [Click here] message, then choose the name of the model you're using (CX-500, CX-400 or CX-300).
3. Click the [Read User's Manual] button. Acrobat Reader starts and the user's manual is displayed.
 - * When you click the button for the first time, the program for installing and setting up Acrobat Reader may start. Follow the on-screen instructions to proceed with installation and setup.
4. You can use the left and right arrow keys on the computer keyboard to advance to the next page or go back to the previous page. (You can also do the same thing using the [◀] and [▶] buttons on screen.)

(1) Choose the model name. (2) Click the button.



* The screens show the version for Windows.



About Adobe Acrobat Reader

Acrobat Reader is a program required to view files in PDF format. Installing and setting up Acrobat Reader 4.0, found on the included CD-ROM, lets you view the manual easily on any computer. Acrobat Reader 4.0 is available in versions for Windows (Windows 95 or later) and for Macintosh (PowerPC, System 7.1.2 or later).

* Acrobat Reader is a product of Adobe Systems Incorporated. For detailed information on how to use it, go to the Acrobat Reader menu and select [Help] to view the online help.

Online Help for the CAMM-1 Driver

For information about how to use the driver, refer to "readme" and the online help. To view online help, install the driver, then follow the steps below.

Windows 95/98/Me

1. Click [Start] - [Settings] - [Printers].
2. Right-click the printer icon for the CX-500/400/300, then click [Property].
3. Click the [Size], [Tool], or [Options] tab.
4. Click the [?] button at the top right of the window, then click the topic you want to know more about.

Windows 2000/XP

1. Windows 2000 : Click [Start] - [Settings] - [Printers].
Windows XP : Click [Start] - [Control Panel]. Click [Printers and Other Hardware]. Click [Printers and Faxes].
2. Right-click the printer icon for the CX-500/400/300, then click [Printing Preferences].
3. The [Layout] tab appears. Click the [Advanced] button.
4. Click the [?] button at the top right of the window, then click the topic you want to know more about.

Windows NT4.0

1. Click [Start] - [Settings] - [Printers].
2. Right-click the printer icon for the CX-500/400/300, then click [Document Defaults].
3. Click the [Advanced] tab.
4. Click the [?] button at the top right of the window, then click the topic you want to know more about.

Part 2

Windows Section

This section describes how to install and set up the included programs (for Windows).

2-1. System Requirements	8
System Requirements for USB Connection	8
System Requirements for Roland CutChoice (Windows)	8
System Requirements for CAMM-1 Driver	8
2-2. Using the CAMM-1 Driver with a Printer-cable Connection (Windows 95/98/Me/NT4.0/2000/XP)	9
To Install	9
2-3. Using the CAMM-1 Driver with a USB Connection (Windows 98/Me/2000/XP)	10
Step 1 : Installing the USB Driver	10
Step 2 : Installing the CAMM-1 Driver	12
Step 3 : Making the Setting for the CX-500/400/300	12
2-4. Installing and Setting Up Roland CutChoice	13
Step 1 : Install the Drivers	13
Step 2 : Install and Set Up Roland CutChoice	13
Step 3: Making the Settings for the CX and the Program	13

2-1. System Requirements

System Requirements for USB Connection

Making a USB connection with Windows requires use of a computer that meets all of the following system requirements. Please note that other configurations cannot be supported.

Operating System	Windows 98/Me or Windows 2000/XP (Windows 95 and Windows NT 4.0 are not supported.)
Computer Conditions	1) Computers preinstalled with Windows 98/Me/2000/XP at the time of purchase (This includes such computers later upgraded to Windows Me/2000/XP.) 2) Computers on which USB operation is assured by the manufacturer of computers

- The ability to make a USB connection depends on the specifications of the computer. To determine whether the computer you're using is capable of correct USB operation, check with the manufacturer of the computer.
- Use a shielded USB cable having a length of 3 meters or less. Do not use a USB hub or the like.

System Requirements for Roland CutChoice (Windows)

Processor	Pentium II 233 MHz or higher
RAM	128 MB or more
Install space	100 MB
Working disk space	1 GB or more
Operating System (*)	Latest version of Windows 98/Me/2000
Video system	800 x 600 screen resolution with 16 bit color or more
Other	4x CD-ROM drive or faster
Supported models	CAMM-1 PRO CX-500/400/300
Compatible programs	Adobe Illustrator 8/9/10, CoreIDRAW 8/9/10
Connection	USB

* This software only supports computer that have these OS factory installed. Computers with user upgraded OS may not work properly.

System Requirements for CAMM-1 Driver

Operating System (*)	Windows 95/98/Me, Windows NT4.0/2000/XP
-----------------------------	---

* Making a USB connection requires a computer that meets the system requirements for USB connection described above.

* There are two types of CAMM-1 driver: one for Windows 95/98/Me and one for Windows NT4.0/2000/XP. When you carry out the installation procedure described later, the correct driver is selected automatically.

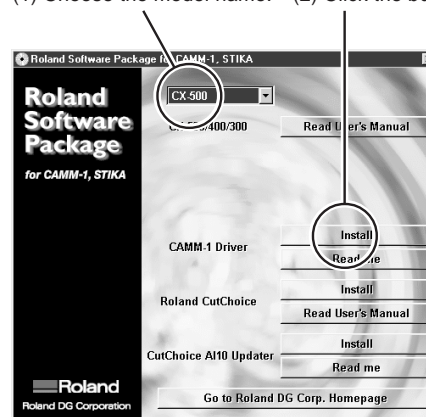
2-2. Using the CAMM-1 Driver with a Printer-cable Connection (Windows 95/98/Me/NT4.0/2000/XP)

To use the CAMM-1 driver with a printer-cable connection, follow the steps below to install the CAMM-1 driver.

To Install

1. If you are installing under Windows NT 4.0/2000/XP, you need full access permissions for the printer setting. Log on to Windows as a member of the "Administrators" or "Power Users" group.
2. Place the included CD-ROM in the CD-ROM drive. The menu screen appears automatically. Click the [Click here] message, then choose the name of the model you're using (CX-500, CX-400 or CX-300).
3. Click the [Install] button.
 - * Clicking the [Readme] button displays information about the driver.

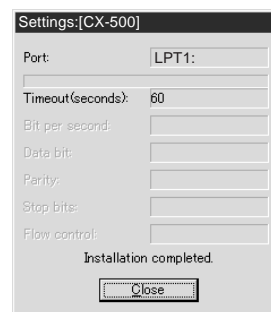
(1) Choose the model name. (2) Click the button.



4. Select [LPT1:] for [Port]. Click [OK].



5. A confirmation screen appears. Click [Close] to finish installing the driver.



6. Use the display menus for the CX-500/400/300 to set [AXIS ROTATE] to [0 deg]. For more information, see the CX-500/400/300 User's Manual, and under "5-2. Details of the Origin-point Location and Cutting Area," refer to "Coordinate Rotation Settings."

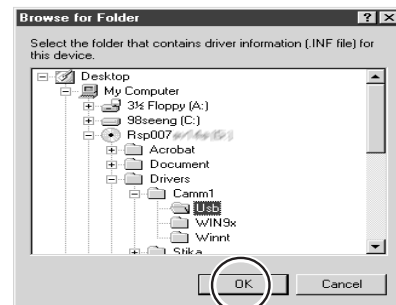
2-3. Using the CAMM-1 Driver with a USB Connection (Windows 98/Me/2000/XP)

Using the CAMM-1 driver with a USB connection requires both the CAMM-1 driver and a USB driver. Follow the steps below to install them.

Step 1 : Installing the USB Driver

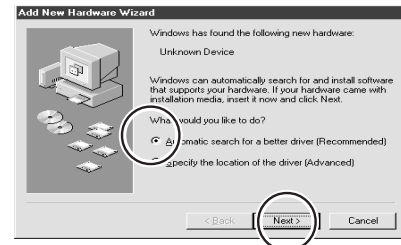
Windows 98

1. Place the included CD-ROM in the CD-ROM drive. The menu screen appears automatically.
2. Switch on the CX-500/400/300 and connect the USB cable. The [Add New Hardware Wizard] appears. Click [Next].
3. Select [Search for the best driver for your device. (Recommended)], then click [Next].
4. Select the [Specify a location] check box, then click [Browse].
5. In [My Computer], double-clicking the CD-ROM icon immediately displays the folders on the CD-ROM. Follow this procedure to double-click the folders in this sequence: first [Drivers], then [Camm1], then [Usb]. When the [Usb] folder opens, click [OK].
6. Use the [Next] button to proceed. At the end, click [Finish].
7. [Add New Hardware Wizard] appears again. Click the [Cancel] button to quit this. Leave the CD-ROM in the drive and go on to Step 2.



Windows Me

1. Place the included CD-ROM in the CD-ROM drive. The menu screen appears automatically.
2. Switch on the CX-500/400/300 and connect the USB cable. The [Add New Hardware Wizard] appears. Click [Next].
3. Select [Automatic search for a better driver (Recommended)], then click [Next]. Installation of the USB driver starts.
If installation does not start, follow the procedure for Windows 98 to install.
4. At the end, click [Finish].
5. [Add New Hardware Wizard] appears again. Click [Cancel] to quit this. Leave the CD-ROM in the drive and go on to Step 2.



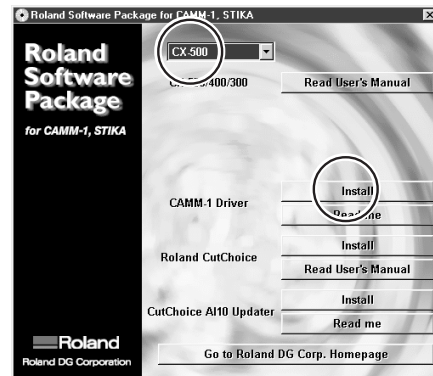
Windows 2000/XP

1. Log on to Windows as a member of "Administrators" or "Power Users" group.
2. Switch on the CX-500/400/300 and connect the USB cable. The USB driver is installed automatically.
3. When [Found New Hardware Wizard] appears, click [Cancel] to quit it.
4. Place the included CD-ROM in the CD-ROM drive. Go on to Step 2.

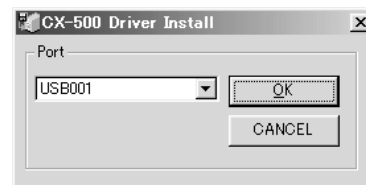


Step 2 : Installing the CAMM-1 Driver

1. At the menu screen, click the [Click here] message, then choose the name of the model you're using (CX-500, CX-400, or CX-300). Click [Install].



2. For [Port], choose [USB00*], then click [OK].



3. A confirmation screen appears. Click [Close] to finish.



Step 3 : Making the Setting for the CX-500/400/300

Use the display menus for the CX-500/400/300 to set [AXIS ROTATE] to [0 deg]. For more information, see the CX-500/400/300 User's Manual, and under "5-2. Details of the Origin-point Location and Cutting Area," refer to "Coordinate Rotation Settings."

2-4. Installing and Setting Up Roland CutChoice

Follow the steps below to install and set up Roland CutChoice. For detailed information about installation and setup and information about how to use the program, see the Roland CutChoice User's Manual.

Step 1 : Install the Drivers

Before you install and set up Roland CutChoice, go to "2-3. Using the CAMM-1 Driver with a USB Connection" and follow steps 1 and 2 to install a USB driver and the CAMM-1 driver.



Be sure to install a USB driver. Also, Roland CutChoice has no direct need for the CAMM-1 driver, but Windows requires it in order to recognize the connection with the CX.

Step 2 : Install and Set Up Roland CutChoice

1. Before you install and set up Roland CutChoice, install and set up either Adobe Illustrator or CorelDRAW.
2. Switch on the CX-500/400/300 and make sure it is connected to the computer using a USB cable.
3. Place the included CD-ROM in the CD-ROM drive. The menu screen appears automatically. Click the [Click here] message, then choose the name of the model you're using (CX-500, CX-400 or CX-300).
4. Click [Install] of the [Roland CutChoice]. The setup screen appears. Choose [English], then click [Next].
5. Use the [Next] button to proceed. If you are asked whether you want to view the readme file, click [Yes]. After you have read the readme file, close the window and follow the on-screen messages to proceed.
6. Double-click the Roland CutChoice icon (Roland CutChoice's shortcut) on the desktop. The [Change Setup] window appears. Click the name of the model you're using (CX-500, CX-400, or CX-300), then click [Next].
7. For [Port], choose [USB00*], then click [Finish].

* If you use Adobe Illustrator 10, the "CutChoice AI10 Updater" is needed. You can find it on the included CD-ROM.

Step 3: Making the Settings for the CX and the Program

1. Use the display menus for the CX-500/400/300 to set [AXIS ROTATE] to [90 deg]. For more information, see the CX-500/400/300 User's Manual, and under "5-2. Details of the Origin-point Location and Cutting Area," refer to "Coordinate Rotation Settings."
2. If you're using CorelDRAW, you need to make the settings to register Roland CutChoice on the menus and elsewhere. For more information, refer to the Roland CutChoice User's Manual.

Part 3

Macintosh Section

This section describes how to install and set up the included programs (for Macintosh).

3-1. System Requirements 16

System Requirements for USB Connection	16
System Requirements for Roland CutChoice (Macintosh)	16

3-2. Installing and Setting Up Roland CutChoice 17

Step 1 : Install and Set Up Roland CutChoice	17
Step 2 : Making the Setting for the CX-500/400/300	17

3-1. System Requirements

System Requirements for USB Connection

- Use Macintosh which USB operation is assured by the manufacturer of computers.
 - The ability to make a USB connection depends on the specifications of the computer. To determine whether the computer you're using is capable of correct USB operation, check with the manufacturer of the computer.
 - Use a shielded USB cable having a length of 3 meters or less. Do not use a USB hub or the like.
-

System Requirements for Roland CutChoice (Macintosh)

Processor	PowerPC 166 or higher
RAM	128 MB or more (*)
Install space	100 MB
Working disk space	1 GB or more
Operating System	Mac OS 8.6 to 9.x (with "Appearance Manager")
Video system	800 x 600 screen resolution with 16 bit color or more
Other	4x (or faster) CD-ROM drive
Supported models	CAMM-1 PRO CX-500/400/300
Compatible programs	Adobe Illustrator 8/9/10
Connection	USB

* Requires virtual memory enabled. Set to 196 MB minimum.

3-2. Installing and Setting Up Roland CutChoice

Follow the steps below to install and set up Roland CutChoice. For detailed information about installation and setup and information about how to use the program, see the Roland CutChoice User's Manual.

Step 1 : Install and Set Up Roland CutChoice

1. Before you install and set up Roland CutChoice, install and set up Adobe Illustrator.
2. Switch on the CX-500/400/300 and connect to the computer using a USB cable.
3. Place the included CD-ROM in the CD-ROM drive. The menu screen appears automatically. Click the [Click here] message, then choose the name of the model you're using (CX-500, CX-400 or CX-300).
4. Click [Install] of the [Roland CutChoice]. The setup screen appears.
5. Choose [English], then click [OK]. Follow the on-screen instructions to proceed.
6. Double-click the Roland CutChoice icon (Roland CutChoice's alias) on the desktop. The [Add Setup] window appears. Click the name of the model you're using (CX-500, CX-400, or CX-300), then click [Next].
7. Make sure [Port] is set to [USB], then click [OK].

* If you use Adobe Illustrator 10, the "CutChoice AI10 Updater" is needed. You can find it on the included CD-ROM.

Step 2 : Making the Setting for the CX-500/400/300

Use the display menus for the CX-500/400/300 to set [AXIS ROTATE] to [90 deg]. For more information, see the CX-500/400/300 User's Manual, and under "5-2. Details of the Origin-point Location and Cutting Area," refer to "Coordinate Rotation Settings."



26015338-R4

R4-020415