

CT-304

DRIVER MANUAL

Thank you very much for purchasing the CT-304.

- To ensure correct and safe usage with a full understanding of this product's performance, please be sure to read through this manual completely and store it in a safe location.
- Unauthorized copying or transferral, in whole or in part, of this manual is prohibited.
- The contents of this operation manual and the specifications of this product are subject to change without notice.
- The operation manual and the product have been prepared and tested as much as possible. If you find any misprint or error, please inform us.
- Roland DG Corp. assumes no responsibility for any direct or indirect loss or damage which may occur through use of this product, regardless of any failure to perform on the part of this product.
- Roland DG Corp. assumes no responsibility for any direct or indirect loss or damage which may occur with respect to any article made using this product.

Contents

Getting Started	ii
First Make the Setting	ii

Chapter 1 Installing the Driver

Installing the Driver	1-1
Windows 95/98/Me	1-1
Windows NT 4.0/2000	1-5

Chapter 2 Driver Settings

What to Do First	2-1
Making the Settings	2-1
Cutting Page	2-2
Etc Page	2-3
Settings for Windows NT 4.0/2000	2-5
Device Settings Page	2-5
Long Size Settings Page (Supported only Windows NT 4.0)	2-6
Other Dialogs	2-7
Use Size Form	2-7
Output in Progress Dialog	2-8
Version Information	2-8

Windows® and Windows NT® are registered trademarks or trademarks of Microsoft® Corporation in the United States and/or other countries.

HP-GL/2 is a trademark of Hewlett-Packard Company (U.S.A.).

Adobe, Illustrator is registered trademark of Adobe Systems Incorporated.

Other names are trademarks or registered trademarks of their respective owners.

NOTICE : Indicates information to prevent machine breakdown or malfunction and ensure correct use.



: Indicates a handy tip or advice regarding use.

Getting Started

This document is the user's manual for the CT-304 driver for Windows on IBM PC-compatible computers.

First Make the Setting

Refer to the table below and make the settings for plotter functions.

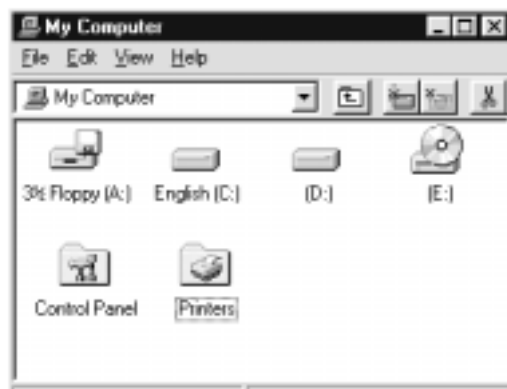
Plotter	Function	Setting value
CT-304	RS-232C communication parameters Command origin point	Data length: 8 bits CENTER

Chapter 1 Installing the Driver

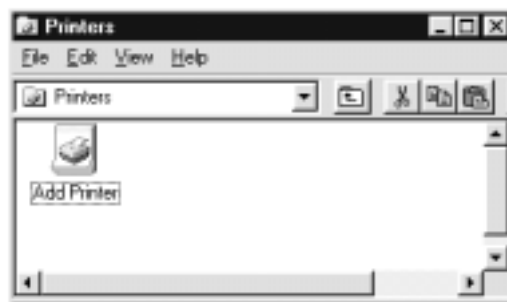
Installing the Driver

Windows 95/98/Me

- ① Start Windows 95,98 or Me.
The following screens are for Windows 98.
- ② Double-click the [My Computer] icon.
The [My Computer] window appears.

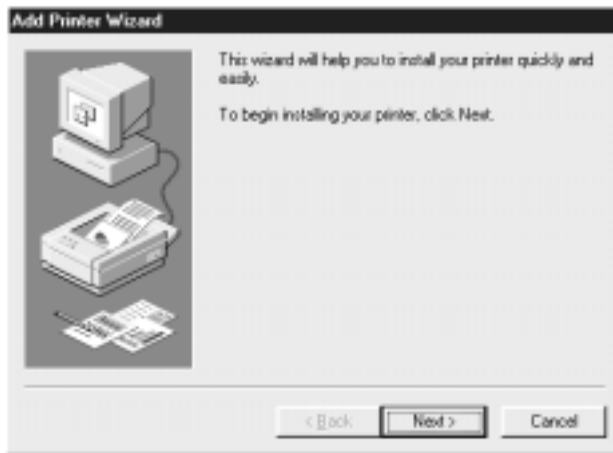


- ③ Double-click the [Printers] icon.
The [Printers] folder opens.



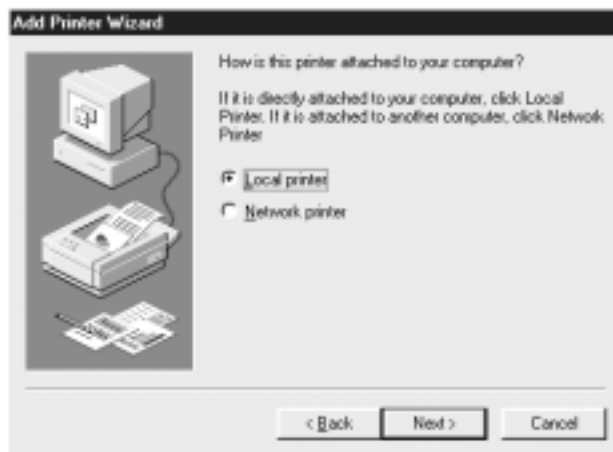
NOTICE If an older version of the driver is already installed, then delete it and restart Windows.

- 4 Double-click the [Add Printer] icon.
The [Add Printer Wizard] window appears.

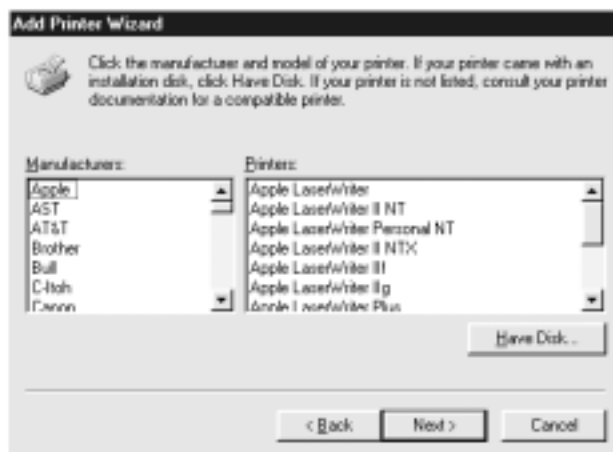


- 5 Click **Next >**.

- 6 Select a [local printer], then click **Next >**.



- 7 Insert the disk, then click **Have Disk...**.

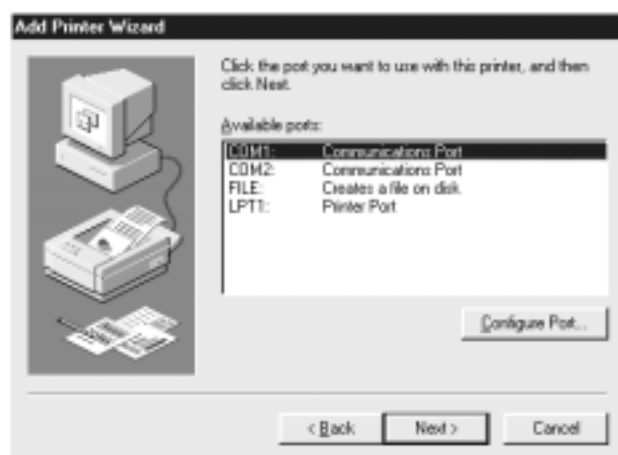


- 8 Click the name of the plotter you're using to highlight the selection, then click **Next >**.
You can select only one plotter at a time.



- 9 Choose the output port, then click **Next >**.

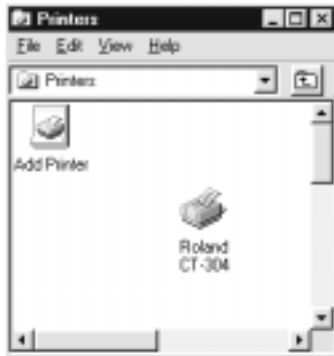
NOTICE Be sure to select the port where the plotter is connected.



- 10 Enter the printer name.
You can change the printer name.
If you need, select "Yes" or "No" to use it as the default printer.



- ⑪ Click .
Copying of the driver starts.
When copying finishes, the driver is added to the [Printers] folder.



Windows NT 4.0/2000

- ① Start Windows NT 4.0/2000.
The following screens are for Windows NT 4.0.
- ② Double-click the [My Computer] icon.
The [My Computer] window appears.




- ③ Double-click the [Printers] icon.
The [Printers] folder opens.




NOTICE If an older version of the driver is already installed, then delete it and restart Windows.

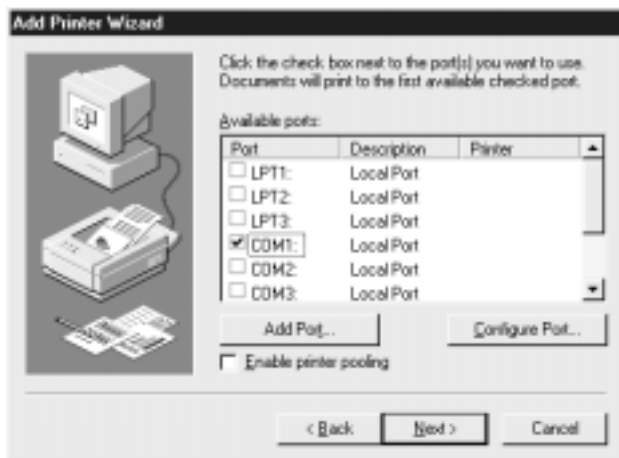
- ④ Double-click the [Add Printer] icon.
The [Add Printer] window appears.


- 5 Select [My computer], then click .

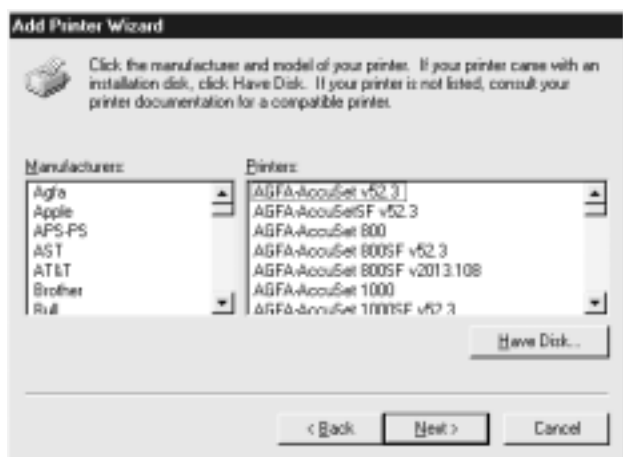


- 6 Choose the output port, then click .

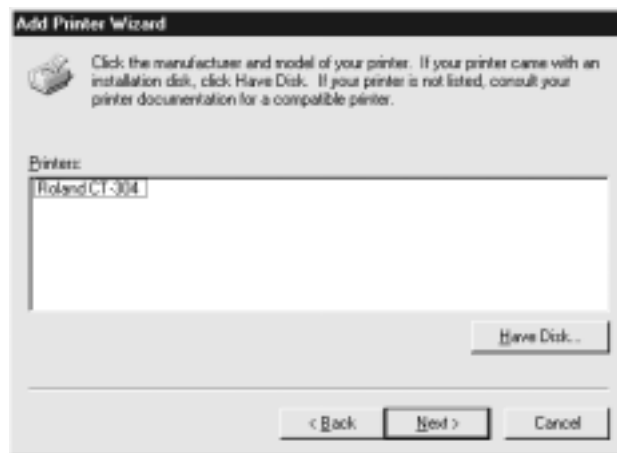
NOTICE Be sure to select the port where the plotter is connected.



- 7 Insert the disk, then click .



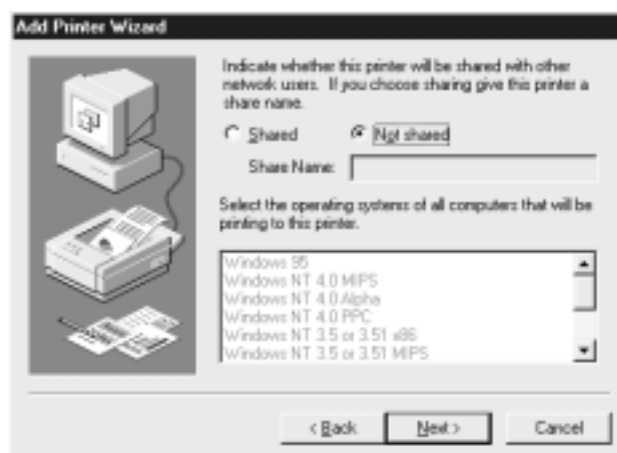
- 8 Click the name of the plotter you're using to highlight the selection, then click **Next >**.
You can select only one plotter at a time.



- 9 You can change the printer name.
Enter the printer name, then click **Next >**.



- 10 Select "Shared" or "Not shared" for sharing the printer on the network, then click **Next >**.



- ⑪ Click **Finish**.
Copying of the driver starts.
When copying finishes, the driver is added to the [Printers] folder.



Chapter 2 Driver Settings

What to Do First

Making the Settings

(1) For Windows 95/98/Me

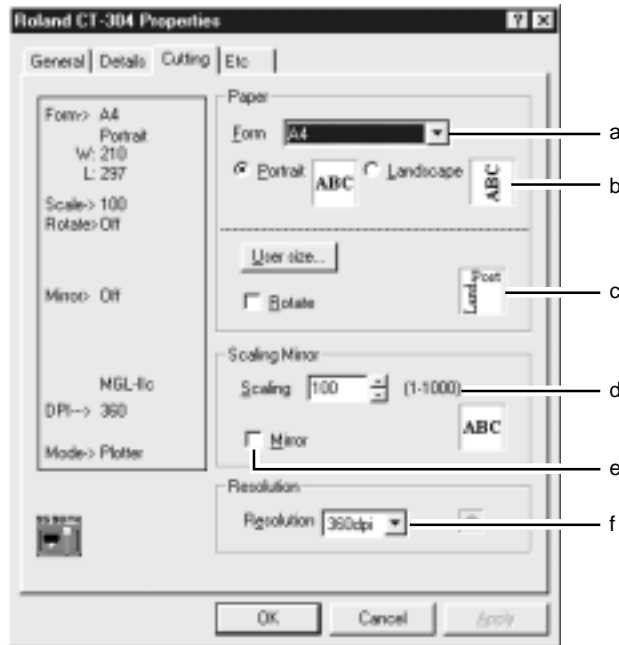
- ① Go into the [Printers] folder and select the plotter.
- ② Right-click to display the menu, then select [Properties] to make it possible to make the settings for various materials.

(2) For Windows NT 4.0/2000

- ① Go into the [Printers] folder and select the plotter.
- ② Right-click to display the menu, then select [Document Defaults] (Windows 2000 : [Printing Preferences]) to make it possible to make the settings for various materials.
Select [Properties] to make it possible to make other settings for the device.

Cutting Page

Settings related to cutting are made on this page.



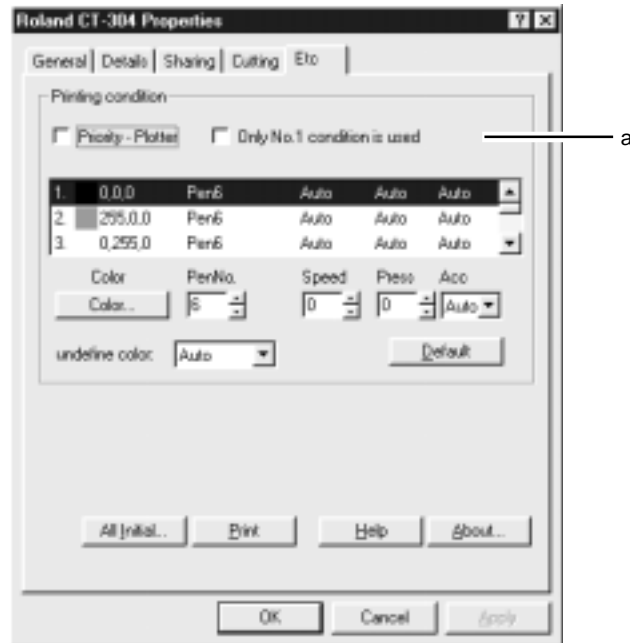
- a. Form : From the list, choose the size of the material loaded on the plotter or a material size recognized by the program.
- b. Orientation : Select either "Portrait" or "Landscape" as the orientation of the plot on the material.
- c. Rotate : Make the setting for the orientation of material placement.
 - On : Landscape
 - Off : Portrait
- d. Scaling : You can enter the scale you want.
- f. Mirror : Selecting "Mirror" performs mirror image printing.
- e. Resolution : Set the driver resolution.
 - 180 x 180 dpi
 - 360 x 360 dpi
 - 720 x 720 dpi



- When cutting quality is too coarse, or when cutting small text, select 720 x 720 dpi.
- Selecting 180 x 180 dpi makes it possible to use 2 m material with Adobe Illustrator.
- Depending on the type of operating system, one or more selections may not be available.

Etc Page

This page is used to make other settings. You can also use it to view the version information.



a. Printing conditions

-Priority-Plotter

- On : The plotter's pen No. is assigned to the displayed color, and the settings for the pen's speed, pressure, and acceleration are made.
- Off : The plotter's pen No. is assigned to the displayed color. The settings made on the plotter are used for the cutting conditions.

-Only No. 1 condition is used

- On : Printing is performed using the conditions for No. 1 in the list of all colors.
- Off : Printing is possible using a pen No. and cutting conditions that are changed for each color.

-Color Use RGB values to make the settings for the drawing colors set by the program. Settings for 32 types are possible.

NOTICE If the RGB values cannot be determined, refer to the RGB values in the Output in Progress dialog.

-Pen No. This makes the setting for the plotter pen No. corresponding to the color.

-Speed When 0 is selected, the setting on the plotter is used. The setting range is as shown below.
CT-304 : 1 to 50 cm/sec.

-Press (pressure) ... When 0 is selected, the setting on the plotter is used. The setting range is from 1 to 5,000 g. The setting depends on the specifications of the head installed in the plotter.

NOTICE The pressure resolution varies from one head to another. Perform test cutting to determine the proper setting.

-Acc (acceleration) ... When Auto is selected, the setting on the plotter is used. The setting range is 0.1 to 0.5 G.

-Undefined color

Pass : The color is not printed.

Auto : Printing uses the immediately previous printing conditions (pen).

1 through 32 : Printing uses the conditions for the specified number in the list.

-Default The printing conditions in the list are used as the default.

-All Initial... This returns settings to the values they had just after installation and setup. Selecting this displays a prompt.

-Print This creates ROLAND.TXT in the spool folder and displays it using the program associated with text (*.TXT) files.

Settings for Windows NT 4.0/2000

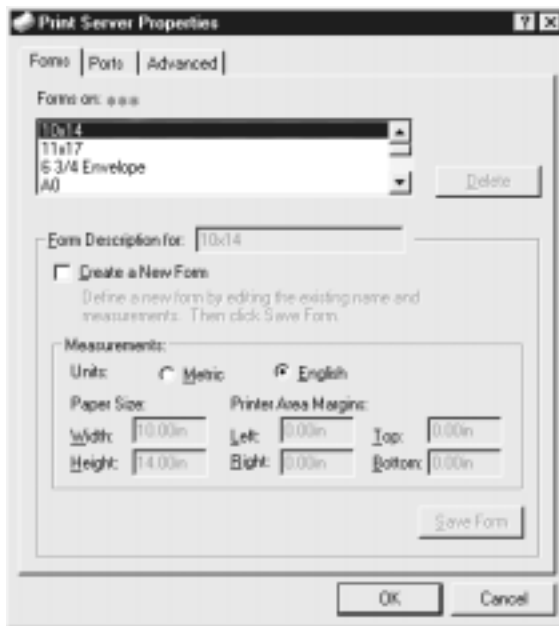
Device Settings Page



For descriptions of settings, refer to "Etc Page" for the respective plotter.


Long Size Settings Page (Supported only Windows NT 4.0)

- ① Open the [Printers] folder.
- ② From the [File] menu, select [Server Properties].
- ③ From among the [Forms on] selections.



- ④ Enter the width and height (length) of the roll material loaded on the plotter.
At Paper Size, under "Width" and "Height", enter the width and height (length) of the roll material loaded on the plotter.
For detailed information, see Help.

NOTICE Enter values that are not more than the user-defined material size for the respective plotter.

- ⑤ Click .
The long-size settings are made.

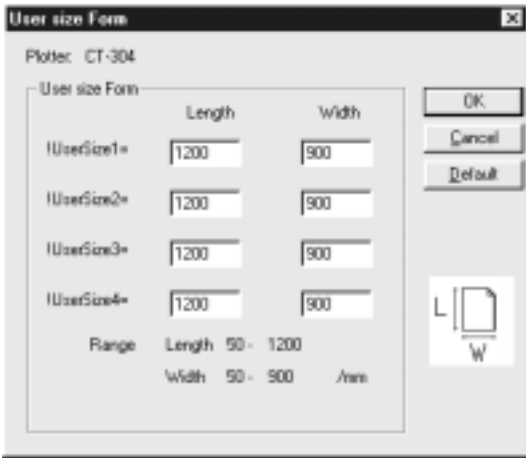
Other Dialogs

Use Size Form

You can make the settings for up to four types of user-defined material sizes.
The maximum values are limited by the resolution of CT-304.

- 360 dpi : 2,000 mm
- 720 dpi : 1,155 mm
- 254 dpi : 3,276 mm
- 508 dpi : 1,638 mm
- 400 dpi : 2,080 mm

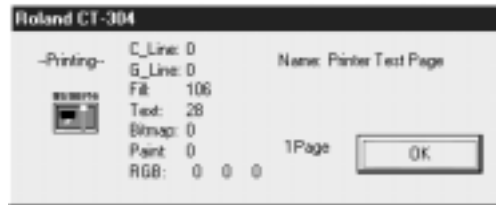
The entered length and width apply to "portrait" orientation.
Clicking Default returns the values to their defaults.



Output in Progress Dialog

This displays information such as the percentage of plotter commands output from the driver to the spooler.

-Plotter processing



-The Sending dialog during plotter processing

During plotter processing, the completion time cannot be estimated, so the number of elements processed by the driver is displayed.

- C_Line : Number of 1-bit line segments
- G_Line : Number of thick-line elements
- Fill : Number of filled multi-sided shapes
- Text : Number of text strings
- Bitmap : Number of bitmaps
- Paint : Number of filled rectangles

RGB values : This displays the RGB values for colors recognized by the driver.

The RGB values of the program and driver match when a full-color palette is used, but may not match when a 256- or 16-color palette is used.

Set the RGB values recognized by the driver to colors on the Pen page.

<Usage>

Here, use the program to print a single line segment in an unknown color to investigate the RGB values recognized by the driver.

Version Information

URL : Clicking this calls up the Roland DGA website in the default browser.



Please read this agreement carefully before opening the sealed package or the sealed disk package

Opening the sealed package or sealed disk package implies your acceptance of the terms and conditions of this agreement.

Roland License Agreement	
<p>Roland DG Corporation ("Roland") grants you a non-assignable and non-exclusive right to use the COMPUTER PROGRAMS in this package ("Software") under this agreement with the following terms and conditions.</p>	
1. Coming into Force	<p>This agreement comes into force when you purchase and open the sealed package or sealed disk package. The effective date of this agreement is the date when you open the sealed package or sealed disk package.</p>
2. Property	<p>Copyright and property of this Software, logo, name, manual and all literature for this Software belong to Roland and its licensor.</p> <p>The followings are prohibited :</p> <ul style="list-style-type: none">(1) Unauthorized copying the Software or any of its support file, program module or literature.(2) Reverse engineering, disassembling, decompiling or any other attempt to discover the source code of the Software.
3. Bounds of License	<p>Roland does not grant you to sub-license, rent, assign or transfer the right granted under this agreement nor the Software itself (including the accompanying items) to any third party.</p> <p>You may not provide use of the Software through time-sharing service and/or network system to any third party who is not individually licensed to use this Software.</p> <p>You may use the Software by one person with using a single computer in which the Software is installed.</p>
4. Reproduction	<p>You may make one copy of the Software only for back-up purpose. The property of the copied Software belongs to Roland.</p> <p>You may install the Software into the hard disk of a single computer.</p>
5. Cancellation	<p>Roland retains the right to terminate this agreement without notice immediately when any of followings occurs :</p> <ul style="list-style-type: none">(1) When you violate any article of this agreement.(2) When you make any serious breach of faith regarding this agreement.
6. Limitations on Liability	<p>Roland may change the specifications of this Software or its material without notice.</p> <p>Roland shall not be liable for any damage that may caused by the use of the Software or by exercise of the right licensed by this agreement.</p>
7. Governing Law	<p>This agreement is governed by the laws of Japan, and the parties shall submit to the exclusive jurisdiction of the Japanese Court.</p>